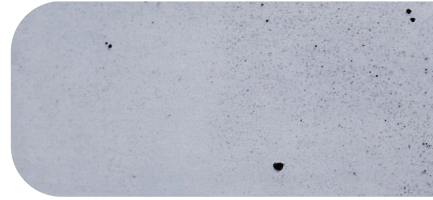


Concrete



ATTENTION

No Scourers or Abrasive Cleaners

Under no circumstances should you use abrasive cloths or abrasive cleaners, similar to Jif or Gumption. Abrasive materials and solutions will scratch the surface and void the warranty. Abrasive materials include, but are not limited to, scouring pads, steel wool and brushes. Always use a soft sponge or cloth.

Cleaning Procedure

Regularly clean with warm soapy water or a pH neutral cleaner using a soft sponge or cloth.

Avoid Harsh Chemicals

While the sealer protects against acid attack, we recommend avoiding direct contact with harsh chemicals, bleach, abrasive and high-acidity products and nail polish remover. Using these may damage the product over time and void the warranty. If these contact the surface, rinse immediately with water and follow cleaning procedure. Wipe away toothpaste and mouthwash residue to prevent discolouration.

Sealer

Although concrete products are sealed to reduce risk of staining, it won't completely protect against scratches caused by sharp objects or prolonged moisture. Similar to natural stone, the surface will develop a patina over time and will change appearance depending on how it's used.

Prolonged Moisture

Avoid leaving the product filled with water for long periods of time. Avoid leaving moist or wet products directly on the surface. This includes soap dispensers.



ABOUT CONCRETE

The Maark team have specially engineered this product for use in wet areas. It's been developed to be water tolerant and to withstand thermal shock.

Concrete is derived from a number of materials that are variable in nature. Due to the nature of concrete, variations in colour and surface texture will occur, making each piece unique. These variations including spots, hairline cracks, and scratches. These are not defects, but rather part of the material's character.

Concrete



EVERYDAY CLEANING + MAINTENANCE

To maintain your concrete product's appearance, regularly clean with warm soapy water or a pH neutral cleaner, using a soft sponge or cloth. Concrete should be rinsed thoroughly and dried after cleaning. As with most natural stone products, the surface will patina over time when exposed to running water, resulting in minor erosion.



WHAT TO EXPECT WITH WATER

Maark's sealed concrete products exhibit a colour change when exposed to moisture. After getting wet, the hue of the concrete may temporarily darken before returning to its original shade once the water has fully evaporated.

Should droplets leave a light ring, simply wipe it clean with a soft cloth. As with all natural materials, a unique patina will develop over their lifetime, adding to its natural beauty.



WARRANTY

A comprehensive statement of warranty is provided on our website.

Each Maark piece is hand-made by our craftspeople, therefore has natural variations. We aim to represent these characteristics throughout Maark's marketing collateral. These natural qualities have no impact on the performance of the product. We suggest obtaining material swatches or viewing the product in person to ensure it meets your expectations.

Concrete

i AESTHETIC FEATURES

The preparation of the product shape, colour and mixture is an artisanal procedure and is influenced by seasonal characteristics such as temperature and humidity. Therefore, differences in colour and surface texture will occur. These idiosyncrasies create a distinctive aesthetic that is integral to the character of the materials and a huge part of the appeal.



SURFACE COLOUR

We value natural variations in colour, whilst ensuring it's not too overwhelming. We tone down variations so they still exist within a more uniform appearance, yet not a monotone outcome.



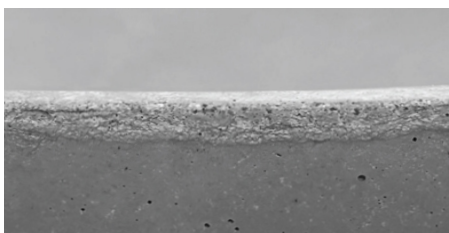
CONCRETE PATINA

As concrete solidifies, it captures a snapshot of the chaotic mixing and chemical reactions that occur during its formation. Over time, the aging of concrete continues this process and creates a unique patina through everyday use in the bathroom and natural erosion.



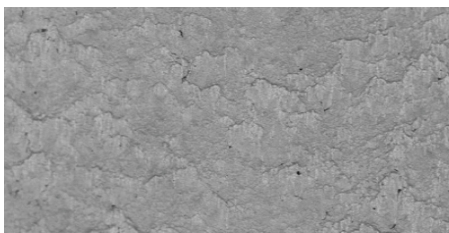
BUG HOLES

Air bubbles trapped within concrete during casting may result in small holes on the surface. These holes vary in size and contribute to concrete's unique texture and appearance. Air content is necessary to improve the products thermal shock performance.



SEAM APPEARANCE

Certain products require a 2-part mould, which can result in a distinctive texture around the edge where the two moulds meet.



FLOW LINES

Flow lines are a natural occurrence in poured concrete due to its liquid state. These flow indicators are typically more pronounced in larger concrete pieces.